

General information

This sheet contains the technical requirements for the correct performance of the show "Piume". However, the show can be adapted to almost any space, whether or not it is used for theatrical performance, after contacting the company to discuss possible changes.

1. Technical contact

Rocio España
+39 3498982862
+34 676728143
tecnica.equiporaro@gmail.com

2. Duration

40 minutes

3. Recommended age

From age 7.

Scenic space

1. Public

The optimal arrangement is in front of the scene and with good visibility (in steps or similar).

2. Dimensions

Proscenium:

Minimum width of 6.00m

Minimum height of 4.00m

Stage:

Minimum width of 6.00m Optimum width of 8.00m

Minimum depth of 6.00m Optimum depth of 8.00m

The show can be adapted to other sizes by contacting the company.

3. Stage

Smooth floor, with dance floor or wooden stage, possibly without slope.

If the stage floor is made of another material, the company should be contacted beforehand to discuss possible adaptations.

4. Quadratura

Quadratura preferably Italian style with three wings per side, black backdrop at the bottom of the stage.

The show can easily be adapted to the German quadrature and to other quadratures by prior agreement for light adaptation.

Lights

The performance can be done under extreme lighting conditions or with natural light, with different rendering, by agreement with the company.

1. Darkness

Possibility of total darkness.

2. American, returns, channels, dimmers

- Number of Americans in the room: 1
- 3/4 returns / 3 dimmer channels _ (in the hall - front light use)
- Minimum number of trusses on stage: 3/4
- Proscenium: 4 returns / 2 dimmer channels
- Half-stage: 2 surrounds / 1 channel dimmer
- Versus 1: 5 returns / 3 dimmer channels
- Versus 2: 4/5 returns / 4 dimmer channels
- Ground dimmer channels: 4 returns / 4 dimmer channels (2 per side)

Total number of dimmer channels: 17

3. Projectors

21 PC 1000kw (Preferably 3 de 2000kw)

PIUME

1Par CP61 (or CP62 depending on the height of the space)
The proposed lighting plan is the minimum for a good staging of the show,

but it is adaptable to the resources of the room by prior agreement.

4. Auxiliary elements

4 ground platforms: 1 x 1.60m high + 3 x 0.20cm

5. Jellies

Jellies will be provided from space. See lighting plan.

Sound

1. FHO Control

- Audio console present in the room.
- Stereo input for audio tracks through a company computer
- Company microphone entry
- Return for spies on stage
- Return to P.A. hall

2. Monitors P.A.

Room P.A. present and adequate for the space

3. Spies

1/2 spies above the stage

4. Microphony

The company uses its headset microphone with control unit on stage

Camerini

- Direct access from the dressing rooms to the stage
- 1 dressing room for two persons, with bath/shower, mirror
- Water for 2 persons for the duration of assembly/show/disassembly
Tea, juices, snacks and fresh fruit are welcome

Working hours and staff

1. Theatre staff

Arrival/ assembly/ : 1 light/audio technician in charge of the

theatre. Performance: 1 audio technician in console

Dismantling: 1 light/audio technician in charge of the theatre.

The audio technician in the console can be brought by the company by prior arrangement.

2. Timing

Unloading time: 0h20

Assembly, lighting and pointing time: 4h00 (depending on space)

Memory and technical spinning time: 1h00

Disassembly time: 0h30 Loading time: 0h10

The timing is linked to the technical equipment of the venue and its conformation. For performances in the morning, lighting and pointing will be done the day before.

3. Example of a timetable for a day with an evening performance 9h00

unloading of material and adaptation to the space 9h30 mounting of light + spotlights

13h00 lunch break

14h30 continue lighting assembly + aiming 15h00 memories + technical spinning

17h00 warming up and rehearsals (*if necessary*) **19h00**

setting up of the space 19h30 cleaning of the space **20h15**

public entrance

20h30 "Feathers" show

Intercom

If the room allows it, intercom connection between stage and director.

Tailoring

Possibility to wash/dry the costumes in case of performances on consecutive days.

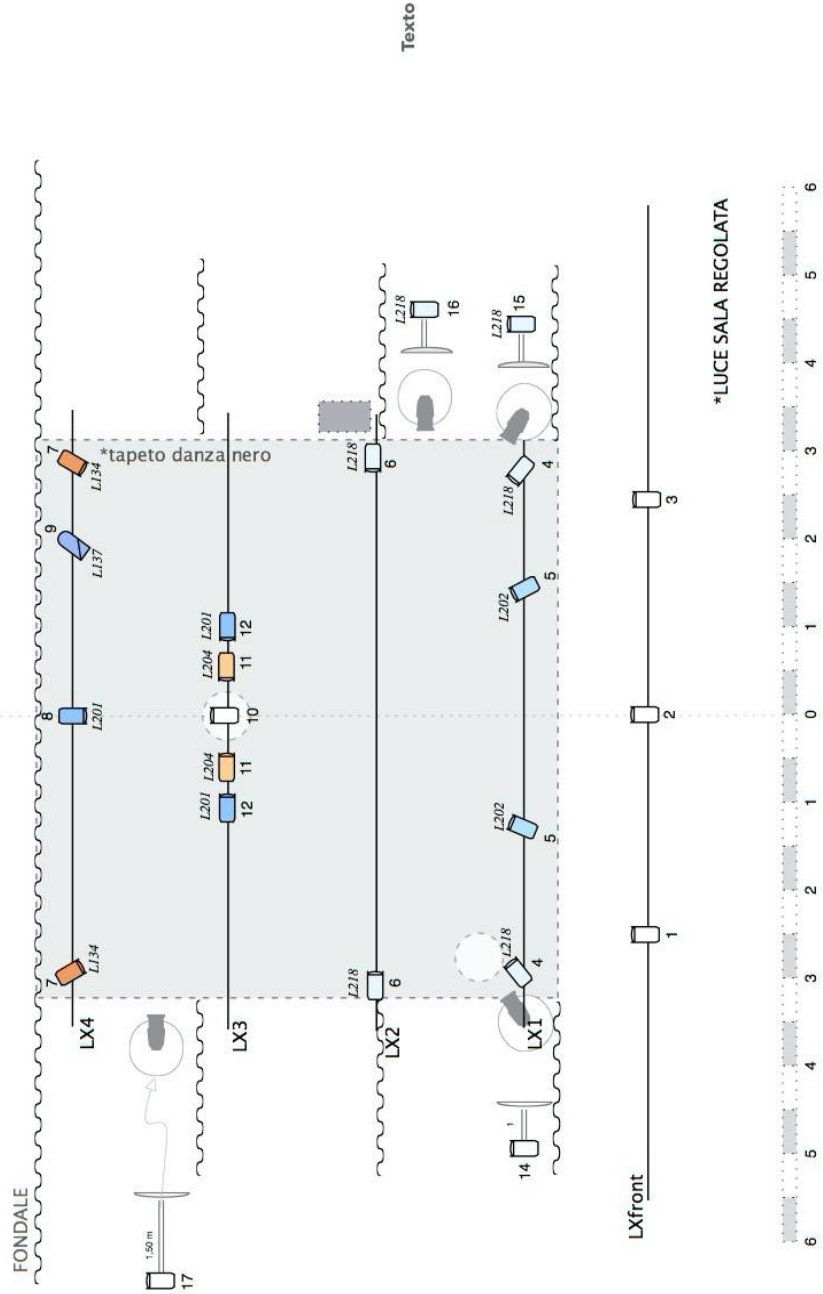
PIANO LUCI/AUDIO
PIUME

contatto tecnico:
Rocio España Rguez.
+34 676728143
tecnica.equiporaro@gmail.com

TRACE AUDIO DALLA SCENA
posizione
computer compagnia

PROIETTORE
N° CANALE DIMMER **GELATINA**

21 x PC 1000kw
1 x PAR CP61/CP62
*LUCE SALA REGOLATA



PIUME

Danza FragilComica between absurdity and truth

by and with Elena Burani

Assistant Directors: Andrea Bettaglio , Alice

Roma Lighting Design: Rocio Espana

Rodriguez Music Creation: Eufemia Mascolo

A journey through the resources and pains of loneliness, in the seesaw of emotional states and inner worlds. of a woman in waiting.

For what?

Of him? Of herself? Of a new sense? A loop and its overcoming...

The show speaks with body language in scores of gestures and virtuosity.

He draws evocative images and moves within the clown's game, on the borderline between deception and truth, creating dynamics that are poetic or grotesque, funny or sublime.

In an uncertain equilibrium, the protagonist plays with the strings of emotions to tell the fragility of an experience.

Without your gaze, like a beacon aimed at me, I disappear into the darkness of nothingness, I do not exist...

How do I have to be to get it?

Or how should I look? Like this or different? How do you want me?

And how I want myself