

# TECHNICAL RIDER – GRETEL

## QuattroX4

Flavio Cortese (Technician) +39 327 9498028 - corteseflavio@gmail.com – direzione@quattrox4.com

### **ATTENTION!**

*If some of the requested specifications are not available,  
please contact us to ensure the success of the show.*

*Technical reductions can be agreed, but we don't like surprises!*  
**THE TECHNICAL RIDER IS AN INTEGRAL PART OF THE CONTRACT.**

### **GENERAL INFO**

Duration: 50 min.

The touring company of the show is 3 persons: 1 artist, 2 technicians.

### **SCENIC SPACE**

Stage: 8m width x 8m depth x 7m height – minimum space: 6 x 6 x 5,5m.

Flat and smooth floor without inclination, black linoleum (*'Marley' style*) dance floor.

Blackbox with minimum 2 legs on each side and borders are required.

It is necessary to have at least 0.8m behind the backdrop and between the legs for the passage of the artist.

Water is used on stage.

It is necessary to clean the stage before the show.

### **SETUP CIRCUS EQUIPMENT**

All rigging gear is provided by QuattroX4.

#### **- AERIAL ACROBATICS ROPE (see attached drawing):**

Two anchoring points with a minimum capacity of 500 kg each one are required at a minimum height of 7m.

An anchoring point with a minimum capacity of 500 kg at floor (*or wall, near floor level*) is required.

Another anchor point with a minimum capacity of 5 kg is required to install a quick release carabiner.

#### **- SCENOGRAPHIC OBJECT (see attached drawing):**

Four anchoring points with a minimum capacity of 1 kg each one are required.

One anchoring point at floor (*or wall, near floor level*) with a minimum 2 kg are required.

## **LIGHTING REQUIREMENTS**

*(see attached lighting plan)*

Quattro4 travels with its own programmable lighting desk (*DMX 5 pin*).

A spare programmable lighting desk is required and it is necessary to know the brand and model in advance.

- 24 x channels dimmer (*minimum 2kW/channel*)
- 13 x PC 1 kW *with barndoors and filter frames*
- 2 x PC 2 kW *with barndoors and filter frames*
- 8 x PAR64 CP62 *with filter frames*
- 8 x ETC ZOOM 25-50° profile or equivalent *with filter frames*
- 4 x floor mounts/plate for single light unit
- 4 x Stands light for single light unit (*height 1,5m*)
- Dimmable audience light.

## **AUDIO**

Professional sound system powerful enough to cover the entire venue, with full range speakers and separate sub-bass speakers.

### **- FOH:**

It is required a mixer audio with minimum 2 channels with TRS (*6.3mm balanced jack*) inputs. It is necessary to know the brand and model in advance.

230V AC power with European two-pin schuko plug and space enough for 2 laptop is required.

### **- STAGE:**

Sidefills or 2 monitors hidden from view of the spectators.

## **LOCAL STAFFING REQUIREMENTS**

- 2 x Stage technicians
- 1 x rigger
- 2 x Lighting technicians
- 1 x Sound technician

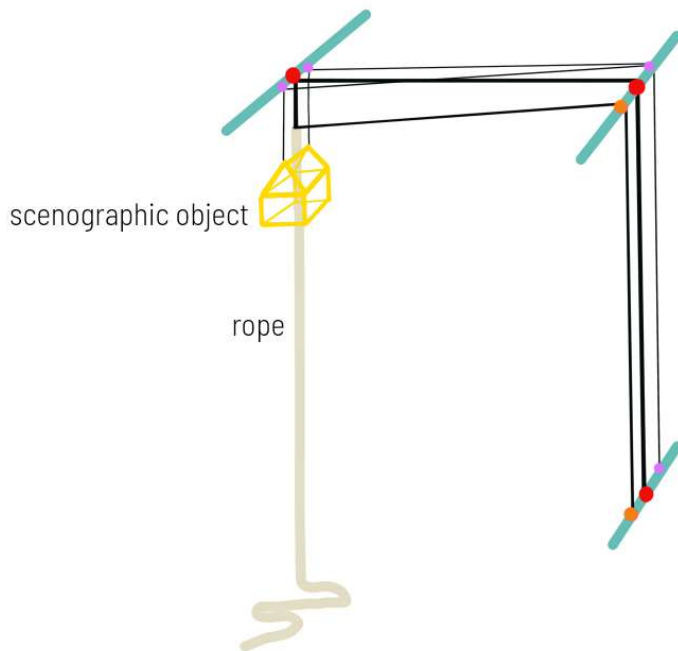
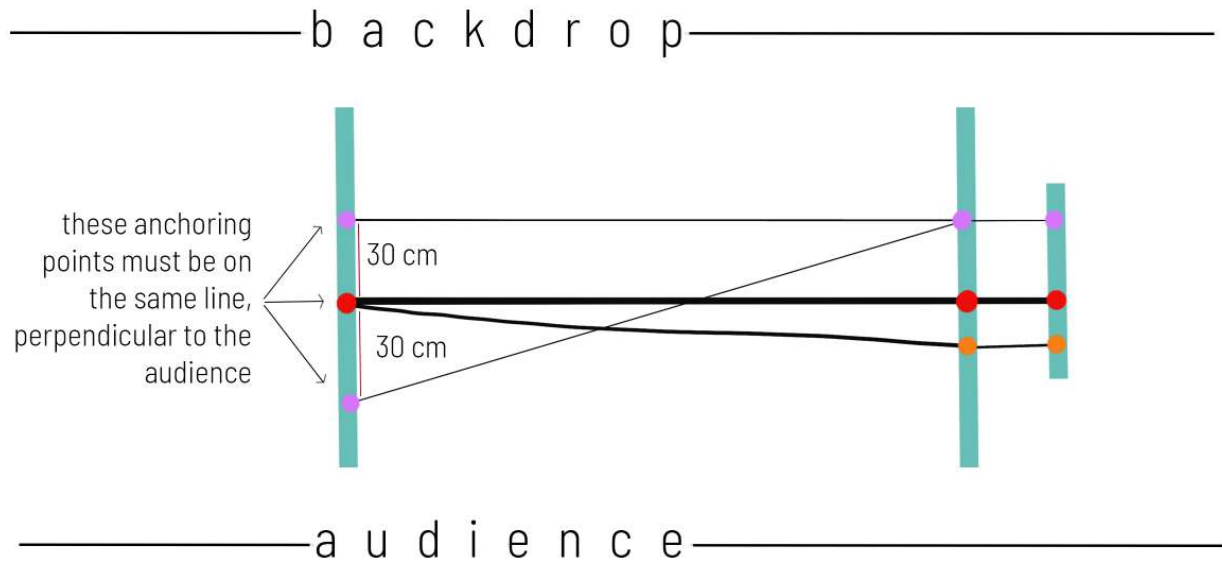
It is necessary to know in good time the hourly availability of the technical staff and the theater.

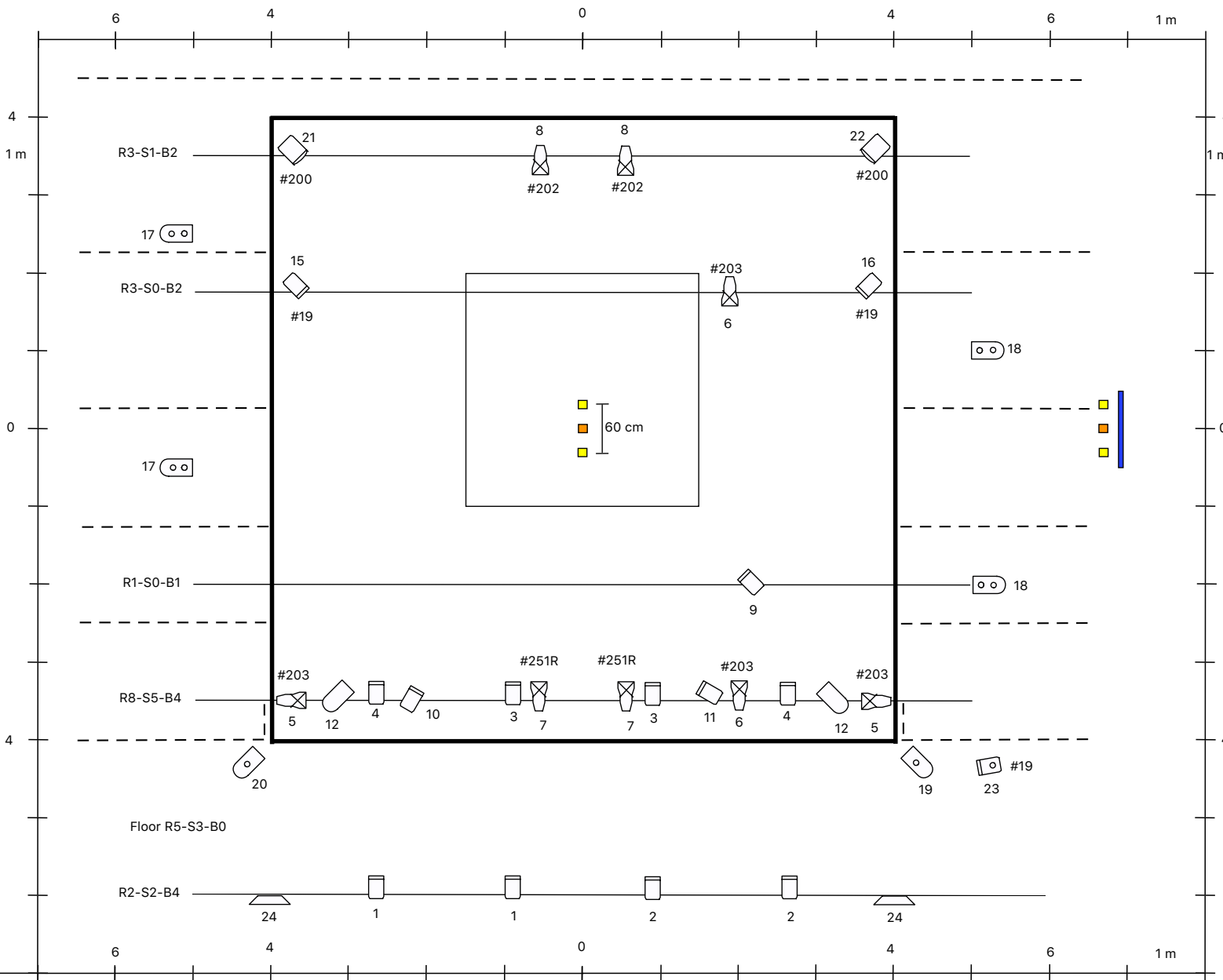
## **DRESSING ROOM AND ACCOMMODATION**

A dressing room with bathroom and shower, water and fruit.  
in case of overnight stay, guarded night parking is required.

## SETUP CIRCUS EQUIPMENT

- anchoring points with a minimum capacity of 500 kg
- anchoring points with a minimum capacity of 5 kg
- anchoring points with a minimum capacity of 1 kg





R=return S=split B=Flag  
 # 24 ch. 1x 2Kw  
 - - - curtains  
 — stage

- # 13 PC 1 kw
- # 2 PC 2 kw
- # 8 PAR 64 CP62
- # = Filter

- # 2 audience lights
- # 8 profile 50°
- # 4 stand 0,1m
- # 4 stand 1,5m

- anchoring points aerial rope load 500 kg
- attachment scenography load 1kg
- we need floor support load 500 kg
- service light behind curtains